



Dear guests!

We are very happy that you want to spend your well-deserved vacation with us.
To make the start of your vacation as pleasant as possible, we will send you some information in advance about your arrival and stay with us.

Address

Wirtseppelerhof
Fam. Neuner
Obern 30
6105 Leutasch

<https://maps.app.goo.gl/585y68nwUB1qDSpQA>



Arrival

Arrival is generally possible from 15:00. Please let us know in advance when you plan your arrival.
We try to be at home, if we don't make it, further information is posted on our arrival board at the entrance.

The journey from the arrival stations Seefeld, Reith and Scharnitz to the nearest bus stop is free of charge for you with a reservation confirmation.

<https://www.seefeld.com/en/arrival-mobility.html>

Billing

Upon arrival you will find your bill in the apartment. Please pay this no later than the evening before departure. On site we only accept cash payment. However, you are welcome to pay the outstanding amount by bank transfer – **but note that the money must be in our account by the time you leave** (usually the transfer takes 2-3 days).

Departure

We ask you to vacate the apartment by 10:00 a.m. at the latest.

Our Organic farm

Our farm has been run as a certified organic farm for about 30 years. We live the passion for nature in our farming. Regionality and organic farming are a matter of course. Especially in summer, a visit

to our herb and vegetable garden is always worthwhile. And of course you can get the herbs you need for your dishes in the herb garden. After all, there are about 200 different (wild) herbs.

Bus

The nearest bus stop is at Gasthof Gaistal (bus stop Leutasch Obern GH Gaistal) and is about 3 minutes walk from us.

<https://maps.app.goo.gl/sU1rYM9keZnRUyuk9>

Bread service

In the high season, the Pichler bakery from Leutasch supplies us with fresh bread (except Sundays and public holidays). You can find a list on our info board with the different types of bread. Please register the day before by 18:00. We will hang the ordered bread on your door in the morning. Billing will take place at the end of your holiday with us.

Shopping

A small supermarket ADEG is just a 2-minute walk from us. There you will find everything for your daily use. Please note the opening hours, which vary depending on the season.

Monday – Friday 08:00 - 12:00 15:00 - 18:00

Saturday 08:00 – 12:00

<https://www.adeg.at/services/maerkte-oeffnungszeiten/martin-schweigl>

There is also an M-Preis in Weidach. This is about 7 minutes by car from us and has slightly extended opening hours.

<https://maps.app.goo.gl/zSPCJVtDChRcyD51A>

E- charging station

Of course, we have an e-charging station for your cars. The settlement takes place at the end of the holiday. Please take your plug with you. If the sun is shining, the charging is of course done with the energy of the sun 😊

Guest card (with cross-country ski trail and bus ticket)

The guest card, which you will receive after filling out the pre-check-in or the analogue form, is also your cross-country ski trail and bus ticket. You don't need another card. The cross-country ski trail or bus ticket is included in the visitor's tax or in the price of your stay.

You are welcome to fill out a pre-checkin via the following link. This will give us all the information we need for your guest card (which is also your cross-country ski ticket in winter).

<https://portal.deskline.net/en/Checkin/Provider/SEE/45870cd9-69a0-4925-a556-f1a4e72d24e9?dbOv=MT6&userId=da0d7541-7056-4e0c-9177-d39dcbc8cada>

Farm Shop

Our farm shop is a self-service farm shop (cash only) and is open from 08:00-22:00. We are happy to help you.

Depending on the season, there are eggs, meat (beef, pork and grilled chicken), tea, syrup, herbal salt, spice pastes, potatoes, vegetables, herbal oils and much more.

Coffee machine

There is a classic filter coffee machine in each apartment.

Contact

Usually there is always one of us on the farm. You are welcome to contact us.

If you have an urgent question, you can also reach us at the following phone number (preferably via Whatsapp or call):

Simone +43 677 6207 6168

Matthias +43 677 624 832 49



Cross-country skiing ❄️

The A5 cross-country ski trail is located in the immediate vicinity of our house. In case of snow, you can enter the cross-country ski trail from the house. There is no need to travel by bus or car. You can get more information on the homepage of Tyrol's high plateau <https://www.seefeld.com/en/cross-country-skiing.html>

In our garage there is a waxing table for ambitious cross-country skiers 😊

Parking lot

There is one parking space in the carport per apartment. This is located between the apartment building and the stable.

Restaurants

We can recommend the following restaurants:

Gasthof Kühtaierhof (traditional) – Kirchplatzl 139, Leutasch
<https://maps.app.goo.gl/Pxtqwi4HXpeJeiDb8>

Mundestadl (small but good) – Moos 7, Leutasch <https://maps.app.goo.gl/dU9TZxcDnEDj51aFA>

Restaurant Brücke (traditional and inventive) – Burggraben 7, Leutasch
<https://maps.app.goo.gl/KQoAdz8rGoryrHCw5>



Weidachstube (always worth a visit) – Weidach 373b, Leutasch
<https://maps.app.goo.gl/d5CkJm1HKCDpzxm7>

We recommend that you reserve a table in advance, especially in high season.

Ski and bike service

In Leutasch there are 2 very good sports shops. There you can shop, rent or arrange a service.

Sport Norz – Weidach 318c, Leutasch
Sport Wedl – Weidach 322g, Leutasch

Playground

In front of the house there is a small playground for our young guests. There are also pedal tractors and bobby cars so that the little ones don't get bored. If that's even possible with us. There is always something to discover.



As a certified "School on the Farm" business, contact with children and raising their awareness of agriculture is very important to us.

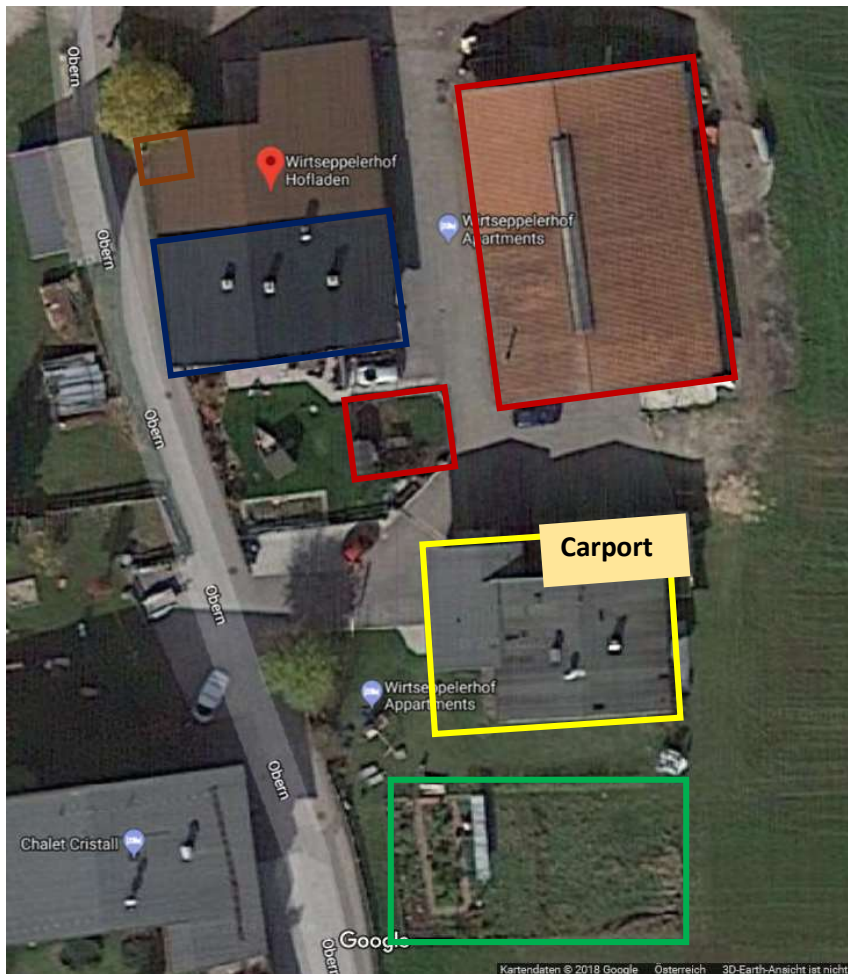
Laundry

Bed and table linen as well as hand and tea towels are available in the apartment. If you need more towels or tea towels or if you want to change them, a short information to us is enough.

More Information about the region

... can be obtained from <https://www.seefeld.com/en/> or from us.

Hofübersicht



Kartendaten: Google, DigitalGlobe

Ferienwohnungen

Stall, Auslauf

Kräutergarten

Hofladen

Wohnhaus